

# HabasitLINK<sup>®</sup>

## M6420 Flat Top Heavy Duty 2.5"

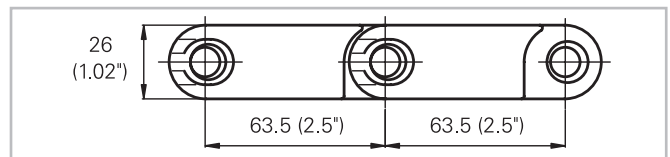
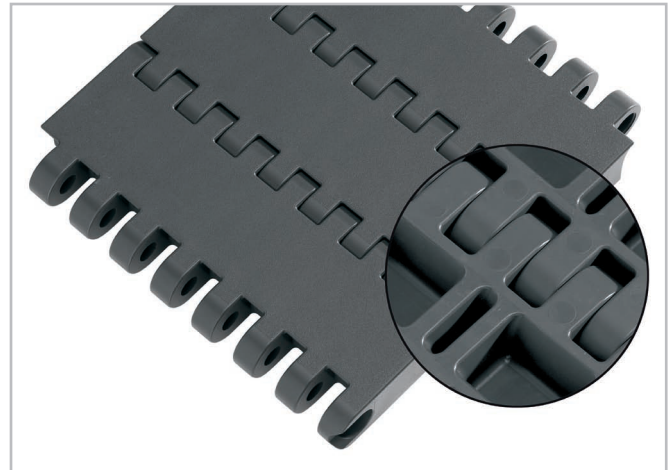


Your Source For Habasit  
Belting And Chain

www.StilesEnterprises.com • 1-800-325-4232

### Description

- Heavy duty belt
- 26 mm (1") thick
- Extremely strong and stiff
- 0% open area
- Closed hinge
- Rod diameter 10 mm (0.39")
- Smart Fit rod retention
- Rough surface
- Antistatic materials available
- Lug teeth solid sprockets



### Belt data

Belt material		PP		PP +AS	
Rod material		POM	PA	POM	PA
Nominal tensile strength F' <sub>N</sub> straight run	N/m	60000	60000	60000	60000
	lb/ft	4110	4110	4110	4110
Temperature range	°C	5 - 93	5 - 105	5 - 93	5 - 105
	°F	40 - 200	40 - 220	40 - 200	40 - 220
Belt weight m <sub>B</sub>	kg/m <sup>2</sup>	17.9	17.9	17.9	17.9
	lb/sqft	3.68	3.68	3.68	3.68

Belt material		POM		POM +AS	
Rod material		PA	Stainless Steel	PA	Stainless Steel
Nominal tensile strength F' <sub>N</sub> straight run	N/m	100000	100000	100000	100000
	lb/ft	6854	6854	6854	6854
Temperature range	°C	-40 - 93	-40 - 93	-40 - 93	-40 - 93
	°F	-40 - 200	-40 - 200	-40 - 200	-40 - 200
Belt weight m <sub>B</sub>	kg/m <sup>2</sup>	26.8	34.8	26.8	34.8
	lb/sqft	5.49	7.14	5.49	7.14

Diameter of idling rollers (minimum)		Diameter of support rollers (minimum)		Diameter for gravity take-up and center drive rollers (minimum)		Backbending radius for elevators without sideguards or hold down devices (minimum)	
mm	inch	mm	inch	mm	inch	mm	inch
100	4	100	4	200	8	200	8

### Standard range of belt widths b<sub>0</sub>

mm (nom.)	100	200	300	400	500	600	700	800	900	1000	1100	1200	1300	etc.
inch (nom.)	3.9	7.9	11.8	15.7	19.7	23.6	27.6	31.5	35.4	39.4	43.3	47.2	51.2	etc.

Real belt widths are in most cases 0.1% to 0.3% smaller.

Standard belt widths in increments of 100 mm (3.9"). Non-standard widths are offered in increments of 50 mm (2"). Non-bricklaid belts 100 mm (3.9") and 200 mm (7.9").

For detailed material properties refer to the HabasitLINK<sup>®</sup> Engineering Guidelines or contact your Habasit representative.